

KEEP YOUR
GARDEN GROWING

AUTUMN TIMES 2022

BRING THE BASIN RESERVE
TO YOUR BACKYARD p.3

GROW YOUR OWN
FOOD NATURALLY p.4

CREATE A MINI FRUIT
GARDEN p.7

LEARN HOW TO PROPAGATE
INDOOR PLANTS p.8

PLANT BULBS FOR A
SPRING SHOW p.10

MAKE THE MOST
OF YOUR SPACE p.11

FREE
ISSUE 40



Photo credit: @poppysfarmyard

TUI AUTUMN TIMES 2022

KIA ORA AUTUMN!

It's a harvest festival in the garden as summer crops finish and are prepped and preserved for the cooler months. It's the perfect time to plant winter veges and herbs, sow or patch your lawn, and choose bulbs for a stunning show when spring arrives.



When you're finished reading me, put me in with your kitchen and garden waste, the worms will love me!

2

3

Create your own backyard cricket pitch.

4

Keep enjoying homegrown harvests.

7

Plant fruit favourites at your place.

8

Learn tips to indoor plant propagation with Hollie.

11

Utilise your space with tips from our Facebook community.

KEEP INSPIRED ON THE DAILY

Follow us on:

f TuiGarden and @@tuigardenandhome

Share what's in your nature and win!

We're continuing to celebrate what's in our nature - as Kiwis, as gardeners and as Tui. Share your autumn garden snaps on Instagram with #myprideofplace to be in to win a bumper garden pack to keep your harvests growing over the cooler months, naturally. Entries close 13th of June 2022.





BRING THE **BASIN RESERVE** TO YOUR BACKYARD AND WIN!

Passionate about the game? This autumn we've launched a limited edition **Tui Basin Reserve Lawn Seed**, the very same seed used by the iconic Basin Reserve!

This premium bare turf, perennial ryegrass, produces a thick blade lawn suitable for high traffic areas like playgrounds, driveways and cricket pitches!

A portion of the sales from each pack sold goes towards supporting the ongoing development of the Basin Reserve.

Chances to WIN Simply buy the **Tui Basin Reserve Lawn Seed** at your local Mitre 10 or garden centre and enter at tuigarden.co.nz to win a one-on-one training session with one of NZ's top cricketers!

We also have Lawn Packs including replica playing jerseys to give away! Keep an eye out on our Facebook page facebook.com/TuiGarden for your chance to win these prizes.



LAWN TIPS FROM TOP NZ CRICKETERS



"The best time to sow your seed is right now (March and April) and also spring!"

Logan van Beek,
Wellington Firebirds



"Once established your lawn will need a feed. Use a premium slow release fertiliser like **Tui LawnForce®**"

Jimmy Neesham,
Wellington Firebirds




"The premium fertiliser formulation of **Tui LawnForce®** delivers a balanced amount of nutrients and provides outstanding results for New Zealand lawns!"

Xara Jetly,
Wellington Blaze



"Watering is your best friend. Water after fertiliser application, and right after your morning coffee is a good time too!"

Michael Bracewell,
Wellington Firebirds

Tag us in your stories and lawn snaps  [@tuigardenandhome](https://www.instagram.com/tuigardenandhome)

KEEP YOUR HARVESTS COMING

Autumn is a major harvest time. The garden will be full of delicious crops to enjoy and it's the perfect time to plant more for a continuous supply over the cooler months. Pick and feed regularly to keep your crops coming.

TUI AUTUMN TIMES 2022

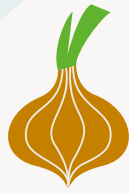
4



Bok choy



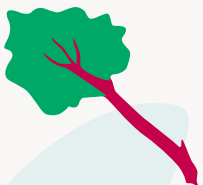
Carrot



Onion



Radish



Rhubarb



Broccoli



Silverbeet/
Spinach



Lettuce/
Mesclun/Rocket



Cauliflower



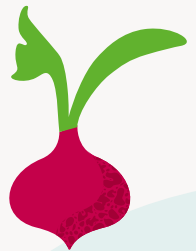
Cabbage



Spring onion



Broadbean



Beetroot



Celery



KEY



Great from seed



Small space pick



Perfect for kids

MIX AND MATCH FOR MEALS

A TOUCH OF SWEET



Blueberry



Citrus



Feijoa



Raspberry



FOR A FLAVOUR PUNCH



Coriander



Parsley



Rosemary



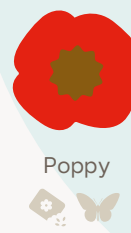
Thyme



Sage



ADD A POP OF COLOUR



100% NATURAL FEEDING FOR CONTINUED HARVESTS!

At planting....

Give your autumn crops the best start by digging **Tui Performance Naturals Fertiliser** into the soil at the time of planting.

This 100% natural pellet stimulates root development and helps improve overall plant health. It contains the all important sheep manure to encourage earthworms and nourish your plants.

- Slow release feeding for up to three months.
- Safe for pots, containers and garden beds.
- Bag made from **40% recycled plastic** and recyclable through the Soft Plastics Recycling Scheme.

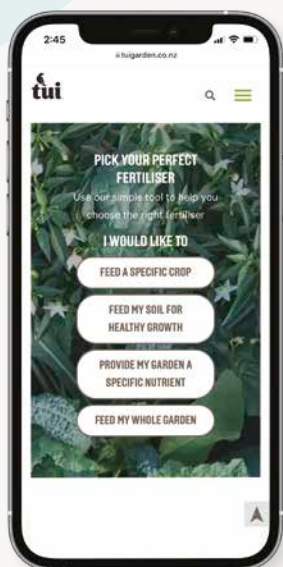


Existing crops...

Give your existing veges and herbs a boost to keep them thriving with **Tui Performance Naturals Liquid Fertilisers**.

Containing 100% natural ingredients for healthy plant and root growth, with the addition of seaweed to help make plants more resilient to temperature extremes and diseases.

- Rapid results - visible results in 7 days.
- Bottle made from **100% recycled plastic** and recyclable through regular curbside recycling.
- Apply every two weeks.



Just like us, plants need food to survive and thrive! With a range of fertilisers available it can be hard to know where to start, so we've created a handy picker tool to help simplify choosing the right plant food.

Scan this QR code and try it out online:



IT'S IN OUR NATURE

We're passionate about what we do; working with each other and our partners to help others grow – it's in our nature. This autumn we're continuing to celebrate what's in our nature: as Tui, as Kiwis, as gardeners. Meet Shannon from the Tui Team along with two of our wonderful partners in the garden.

Shannon growing veges in her Papamoa patch



Name: Shannon

Role: Customer Service & Admin Superstar

Garden type: Edible home garden in Papamoa

Top 3 autumn crops: Broccoli, silverbeet and rhubarb

Top garden tip: Get a worm farm! They are great to recycle your leftovers into nutritious worm tea and worm castings to feed your garden, as well as being fun for kids!

Top Tui product: Tui Seaweed & Fish Fertiliser



Name: Poppy @poppysfarmyard

About: 24 years old, living on an established acre with my parents and pets in the suburbs of Canterbury

Garden type: Kitchen garden hideaway with no-dig raised beds!

Top 3 autumn crops: Bright lights silverbeet, cavolo nero and French breakfast radishes - yum!

Top garden tip: Mulch is your best friend in the garden! Use it everywhere and often to keep plants protected and happy

Fave Tui product: Tui Performance Naturals All Purpose Fertiliser



Poppy in her kitchen garden hideaway



Name: Natalie Edwards

Role: Fundraising Manager for Garden to Table

Garden type: Mid-sized urban garden of herbs, vegetables and ornamentals in Auckland

Top 3 autumn crops: Blueberries, beetroot, calendula

Number one kids crop: I have two, rocket - when direct sown it comes up so quick - like a rocket! And calendula to teach about pollinators and companion planting

Top garden tip: Grow what you most love to eat and cook with and don't forget flowers for pollination

Fave Tui product: I love giving plants a soak in Tui Organic Seaweed Plant Tonic before transplanting and it's great as a boost for the veggie garden



Natalie in her garden with Moxie



GROW FRUIT FAVOURITES

Create your own mini orchard and enjoy fruit freshly picked from your own backyard. Below are some hardy, easy care options, that are easy to keep on the smaller side.

1 CHOOSE YOUR FRUIT

Select varieties of fruit that you like to eat, and that are suited to where you live – check your local garden centre for top recommendations.

FEIJOAS

- Consider size, flavour and fruiting time when choosing a variety.
- It's a good idea to plant a couple of different varieties, to enhance pollination and fruiting.
- There are early, mid and late ripening varieties so consider planting a mix to spread out your season.
- Top picks include Apollo, Kaiteri, Unique, Wiki Tu, and Bambina.



CITRUS

- Whether it's lemon, lime, mandarin, orange or grapefruit, pick a citrus variety based on your garden and cooking needs.
- Favourites include: Tahitian Lime – a vigorous, hardy tree that grows to 2–4 metres tall producing small, oval bright green fruit which become light yellow when ripe, and Meyer lemon which fruits on and off year-round and being a hardy lemon variety, it is also suited to South Island climates.



BLUEBERRIES

- Consider your climate when choosing blueberries as they enjoy a certain amount of chilling time.
- Blueberry Southern Highbush and Rabbiteye varieties are best grown in warmer areas of New Zealand as they have a lower chill requirement. Blueberry Northern Highbush varieties are suited to the more temperate regions. Check the plant labels.
- Most blueberries are at least partially self fertile but planting a combination of varieties of the same **type** will ensure good cross pollination and therefore good cropping.
- Blueberry plants grow naturally as a bushy shrub, up to 1.5m tall or can be pruned to keep at 1m tall.



2 CHOOSE A SPOT

A sunny spot sheltered from the wind is ideal for planting these fruit trees. Sun is a key ingredient to both fruit growth and taste.

3 PREP YOUR SOIL

Healthy, happy plants start with the soil! Prepare the planting area well by digging in compost and sheep pellets. Then add a layer or fill your chosen pot with **Tui Citrus & Fruit Mix**.

4 CARE FOR YOUR PLANTS

Ensure your fruit grows to its full potential with regular watering, mulching and feeding. During spring, summer and autumn apply **Tui Performance Naturals Citrus & Fruit Fertiliser** every three months, or choose the liquid option and add to your watering can every two weeks for a healthy boost.

TRY SOMETHING DIFFERENT

- Double grafted Black Doris and Santa Rosa plum – two plum varieties grafted onto one rootstock offers you two different fruit to harvest on one plant for longer fruiting!
- Use blueberries and feijoas to create an edible hedge for privacy.
- Plant strawberries under your citrus trees for a lovely look and more fruit goodness.



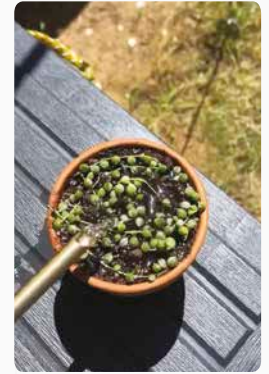
PROPAGATE INDOOR PLANTS WITH HOLLIE



@hollielovesplants

When your indoor plants start growing like crazy it's time to propagate! Follow Hollie's helpful methods to plant propagation and you'll be filling your home with more indoor plant babies you've grown yourself.

TRAILING PLANTS



1. This method is great for trailing plants like String of Turtles, String of Pearls and Chain of Hearts.

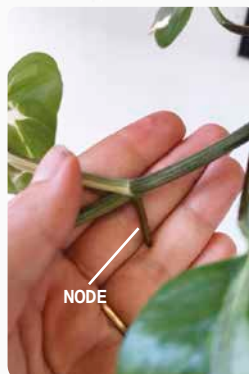
2. You'll need a small pot and **Tui Indoor Plant Mix**. Fill the pot with mix right to the brim.

3. Take cuttings of the plant after at least five leaves. Take as many cuttings as you like (the more the better).

4. Place the cuttings on top of the soil and bent wire cut and bent into U shapes to hold the strands down and help them establish.

5. Keep the top layer of soil moist and place the pot in a warm, sunny spot. It will soon establish roots and start growing!

WATER PROPAGATION



1. This method is great for syngoniums, monstera, pothos, philodendrons, peperomia and similar plants.

2. Every cutting will need a node. They aren't always easy to spot, so look for these small bumps as shown in the photo above.

3. Cut between the nodes and fill a glass with water. Place your cutting in water, ensuring that the node is submerged.

4. Within a couple of weeks (or months) you'll notice that the roots are starting to grow. When they're 1-2 inches long they're ready to plant!



CREATE A THRIVING GREEN OASIS

Once the new additions to your indoor plant family become established, take care of them to ensure they stay healthy and thriving! We have plenty of options to suit how you like to feed your plants.



FEED & FORGET

Specially developed for indoor plants, **Tui Enrich Indoor Plant Controlled Release Fertiliser** delivers nutrients to your indoor plants and their soil for up to six months. You can literally feed them and forget, and rest assured they will still be getting the goodness they need!

The pottle is also made from **100% recycled content!**



POUR & FEED

You can't go wrong with a bottle of **Tui Enrich Pour & Feed** to keep your plants happy. Our Tui Enrich Pour & Feed fertilisers are ready to use with no mixing required, simply pour onto moist soil using the cap and you're away! Your plants will love a feed of this every few weeks.

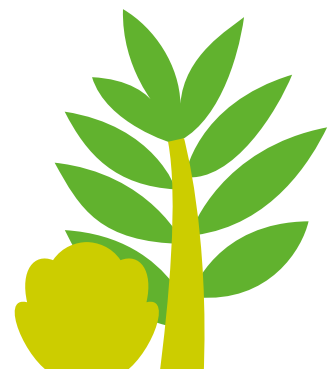
We have three variants to choose from depending on your variety of indoor plants; **Indoor Plant** (suitable for most common indoor plants), **Cacti & Succulent** and **Orchid & Bromeliad**.



FUSS FREE

Introducing the simple solution for feeding your indoor plant babies; all **NEW Tui Indoor Plant Fertiliser Pods**. Each pod is a blend of perfectly balanced nutrients that are released as your plants need them, for up to six months. Feeding your indoor plants literally couldn't be easier - simply push the required number of pods into the soil and water as required.

Keep an eye out for **Tui Indoor Plant Fertiliser Pods** arriving in stores this autumn.



We love seeing your collections and stunning varieties of plants that fill your homes. Share your indoor plant snaps with **#tuiplantparent** on Instagram and you could win a new plant + pot along with everything you need to care for it.

PLAN YOUR SPRING SHOW

Planting bulbs in autumn means in spring you'll be rewarded with beautiful, fragrant floral displays. Bulbs come in a wide range of varieties and colour that can be mixed and matched for new and interesting combos!

NEW THIS SEASON! FROM NZ BULBS



Daffodil Romy



Freesia Anney



Tulip
Negrita Parrot



Anemone
Fullstar Mix



Daffodil Czardas



Dutch Iris
Pink Panther

SUN LOVERS

Daffodils,
tulips,
hyacinths,
lilies,
gladiolus

SHADE LOVERS

Snowdrop,
bluebells,
snowflake,
trillium

DON'T FORGET THE CLASSICS

You can't go past older varieties such as King Alfred with their big yellow trumpets, crocus, Grape Hyacinth and mixed freesias, anemones and ranunculus.

CREATE THE LOOK

- Stagger planting your bulbs to create continuous colour. By planting your bulbs in groups a few weeks apart you'll be rewarded with an extended display as new blooms emerge when old ones die off.
- Planting different types of bulb varieties together can achieve interesting height and colour combos for added visual impact.
- Create 'garden bouquets' either in the ground or in pots and containers by layering smaller bulbs over top of bigger bulbs. For example, plant daffodils or tulips 15cm deep, then plant grape hyacinths 7cm on top of them, or mix together your favourites for your own spring bouquets ready to pick or admire.



- Pick a mixture of bulbs within a colour scheme. We love the colour combination of purple and white, or opt for a mix of bright yellow, red and orange to give your garden an extra colour pop.
- If planting in pots, plant the shorter bulb variety along the outer with the taller variety in the middle.
- Plant bulbs with other flowers for an extra exciting show – try a few tulips with pansies or violas, or anemone with polyanthus. You could also plant bulbs with winter lettuce, cabbage and spinach.



TIPS FOR SMALL SPACES

Finding the space to plant all the crops that you want can be a challenge, especially if you have an urban property or smaller garden area.

We've put together top tips from our Facebook friends so you can get the most out of your space.



Don't worry about straight lines! There is sunflower, cucumbers, radishes, bok choy, lettuce, pumpkins and zucchini in this patch at the front of the house.

– Tessa



I have two old wheelbarrows with holes in the bottom for my lettuce plants that I can shift around. In winter I put them in the glasshouse so I can have lettuce all year round.

– Karen

Three sisters planting – it's a type of companion planting where you can grow beans up your corn and pumpkins underneath. You can do it with sunflowers and other plants too.

– Shannon



Inter and companion planting. I have a garden full of strawberries, Chinese cabbages, kohlrabi, chives, lettuce, silverbeet and even a dahlia. Every inch of space is utilised by something. – Brittany

We let a pumpkin grow across the back part of our lawn this summer. Once it dies off, we'll give the area a mow and possibly a light seed and you'll never know it was there. – Hannah

Don't worry too much about the distance on labels, think about how big the end product is and aim for that. We get so much more produce than we used to! – Roanna



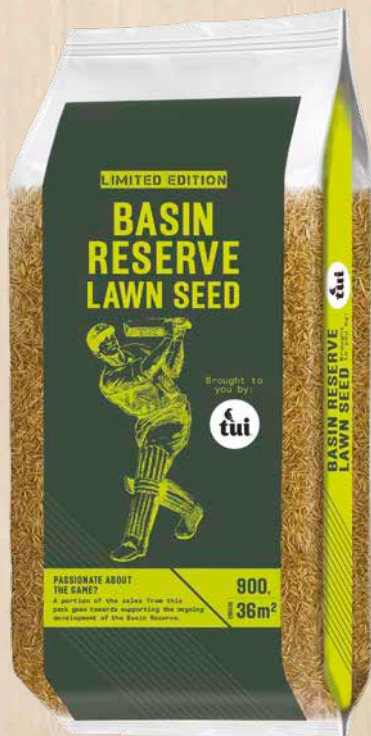
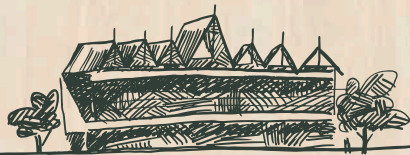
TUI TIP:


A fun idea is to plant a 'Feature' 'Filler' and a 'Spiller' in larger pots. e.g. a fruit tree as the **Feature**, lavender as a **Filler**, and then a flowering plant which will **Spill** over the edge of the pot.

Get creative with planters! Options include: concrete planters, half wine barrels, terracotta or wooden planters, fabric wall pockets, pallet gardens and even upcycled baths.

BRING THE BASIN RESERVE TO YOUR BACKYARD AND WIN!

Buy the Tui Basin Reserve Lawn Seed and enter the draw to win a one-on-one training session with one of NZ's top cricketers.



Head over to  TuiGarden for your chance to win replica playing tops!

Find out more at tuigarden.co.nz or scan this QR code



Competition is open to New Zealand residents only.

Competition entry dates are 21 February 2022 – 31 May 2022.

Proof of purchase must be retained. See tuigarden.co.nz for full terms and conditions.